

Lower Thames Crossing

9.60 Supplementary Walking, Cycling and Horse Riding (WCH) Maps (Volume C)

Infrastructure Planning (Examination
Procedure) Rules 2010

Volume 9

DATE: August 2023
DEADLINE: 2

Planning Inspectorate Scheme Ref: TR010032
Examination Document Ref: TR010032/EXAM/9.60

VERSION: 1.0

Lower Thames Crossing

9.60 Supplementary Walking, Cycling and Horse Riding (WCH) Maps (Volume C)

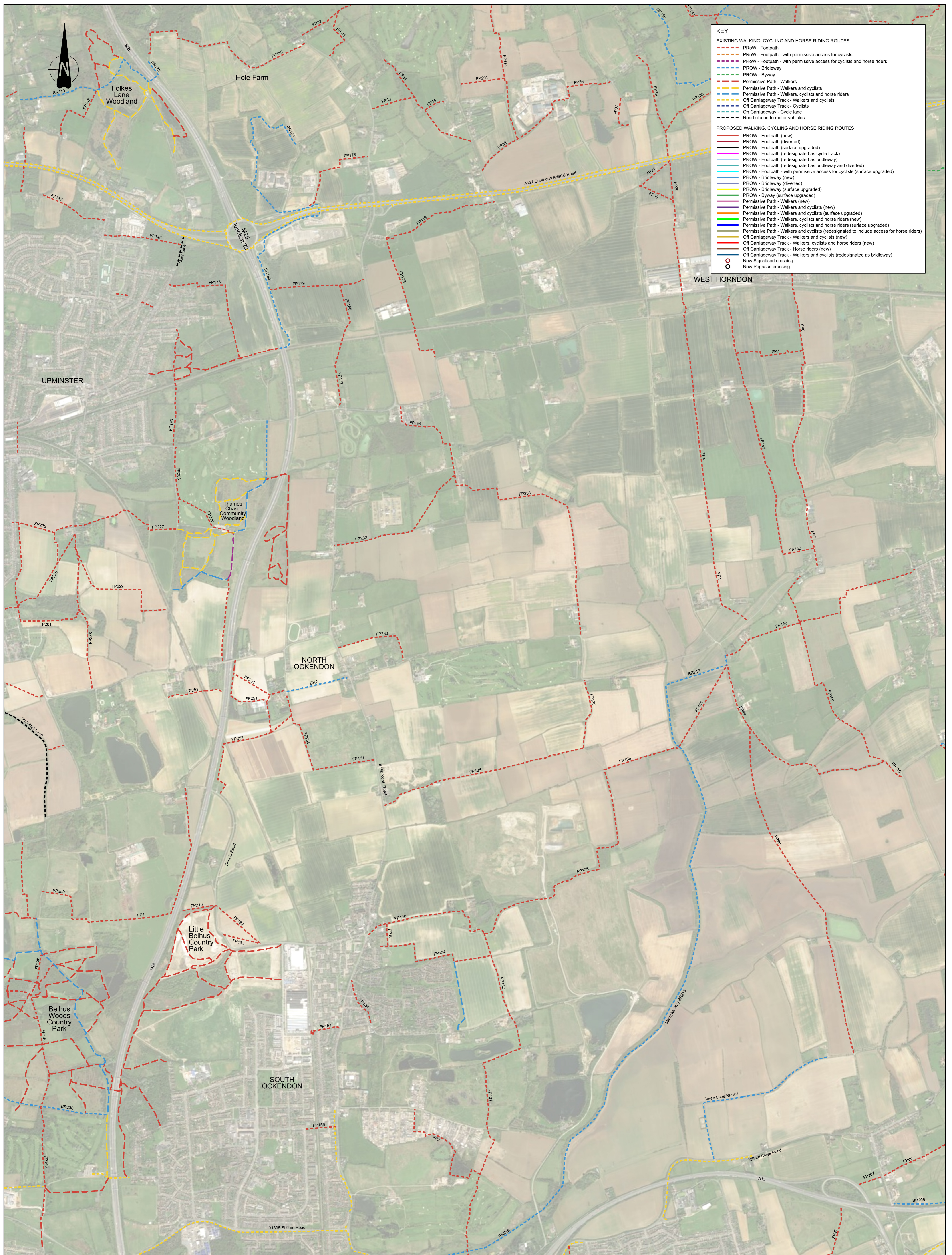
List of contents

	Page number
1 WCH Maps Introductory Text	1

1 Supplementary Walking, Cycling and Horse Riding (WCH) Maps Introductory Text

- 1.1.1 The Applicant committed in the Post-event submissions, including written submissions of oral comments for OFH2 [[REP1-185](#)] in response to the comments made by the British Horse Society, to provide a new set of maps to draw together all the various sources of information on Walking, Cycling and Horse Riding (WCH) routes into a single place.
- 1.1.2 The purpose of these Supplementary WCH Maps, published at Deadline 2, is to:
- a. Consolidate, into a single set of plans, and on a small number of map sheets, details of both existing and proposed WCH routes shown in other plans submitted as part of the Development Consent Order (DCO) Application.
 - b. Act as a quick reference document, which is supplemented by other plans at a larger scale showing details of existing and proposed WCH routes.
 - c. Provide a better understanding of:
 - i. The Applicant's WCH proposals, in particular the difference between existing WCH routes that the Applicant would improve and new routes that the Applicant would create.
 - ii. The categories of users (for example horse-riders) the WCH routes are intended for.
- 1.1.3 These Supplementary WCH Maps are being produced to assist interested parties considering the existing plans in the DCO Application which show details of existing and proposed public rights of way and WCH routes. The existing plans (or documents containing plans) are:
- a. 2.7 Rights of Way and Access Plans Volume B (sheets 1 to 20) [[APP-025](#)]
 - b. 2.7 Rights of Way and Access Plans Volume C Version 2 (sheets 21 to 49) [[AS-032](#)]
 - c. 6.2 Environmental Statement – Figure 13.4 – Population and Human Health Assessment – Proposed WCH Links [[APP-320](#)]
 - d. 7.9 Transport Assessment - Appendix A – Public Rights of Way [[APP-530](#)]
 - e. Project Design Report Part E – Design for Walkers, Cyclists and Horse Riders [[APP-512](#)]
- 1.1.4 The Supplementary WCH Maps include six map sheets: To ensure that the file size of this document does not exceed the 50MB limit prescribed by the Planning Inspectorate, the document has been split into three volumes:

- a. Volume A contains two sheets covering the area to the south of the river Thames, the first showing existing unchanged WCH routes and the second showing proposed WCH routes.
 - b. Volume B contains two sheets covering the area to the north of the river Thames between Tilbury and A13 junction, the first showing existing unchanged WCH routes and the second showing proposed WCH routes.
 - c. Volume C contains two sheets covering the area to the north of the river Thames between the A13 junction and the M25 junction 29, the first showing existing unchanged WCH routes and the second showing proposed WCH routes.
- 1.1.5 The Applicant recommends that to get the full benefit of the Supplementary WCH Maps, the reader should view the existing and proposed WCH routes side by side if possible. The reader should consult the plans referred to at 1.1.3 for a different scale, and the plans at 1.1.8 for the Order limits.
- 1.1.6 The Supplementary WCH Maps are designed to be viewed on a screen and do not replace the existing plans at 1.1.3. These maps therefore do not conform with Regulation 5(3) of The Infrastructure Planning (Applications: Prescribed Forms and Procedure) Regulations 2009 in terms of scale. However, the WCH Maps show the same design as shown within the Rights of Way and Access Plans Volume B (sheets 1 to 20) [[APP-025](#)] and the Rights of Way and Access Plans Volume C (Version 2) (sheets 21 to 49) [[AS-032](#)].
- 1.1.7 The Supplementary WCH Maps use a consistent key applicable to the map set as a whole, rather than being tailored to each individual map sheet. This means that there may be some items shown in the key that are not present on a given map sheet.
- 1.1.8 For ease of viewing and to make it easier to see individual WCH routes, the Supplementary WCH Maps do not show the Project's Order Limits. The Order Limits can however be viewed in other plans including the Location Plan [[APP-005](#)], the Rights of Way and Access Plans Volume B (sheets 1 to 20) [[APP-025](#)] and the Rights of Way and Access Plans Volume C (Version 2) (sheets 21 to 49) [[AS-032](#)].



KEY

EXISTING WALKING, CYCLING AND HORSE RIDING ROUTES

- PRoW - Footpath
- PRoW - Footpath - with permissive access for cyclists
- PRoW - Footpath - with permissive access for cyclists and horse riders
- PRoW - Bridleway
- PRoW - Byway
- Permissive Path - Walkers
- Permissive Path - Walkers and cyclists
- Permissive Path - Walkers, cyclists and horse riders
- Off Carriageway Track - Walkers and cyclists
- Off Carriageway Track - Cyclists
- On Carriageway - Cycle lane
- Road closed to motor vehicles

PROPOSED WALKING, CYCLING AND HORSE RIDING ROUTES

- PRoW - Footpath (new)
- PRoW - Footpath (diverted)
- PRoW - Footpath (surface upgraded)
- PRoW - Footpath (redesignated as cycle track)
- PRoW - Footpath (redesignated as bridleway)
- PRoW - Footpath (redesignated as bridleway and diverted)
- PRoW - Footpath - with permissive access for cyclists (surface upgraded)
- PRoW - Bridleway (new)
- PRoW - Bridleway (surface upgraded)
- PRoW - Byway (surface upgraded)
- PRoW - Byway (new)
- PRoW - Byway (surface upgraded)
- Permissive Path - Walkers (new)
- Permissive Path - Walkers and cyclists (new)
- Permissive Path - Walkers and cyclists (surface upgraded)
- Permissive Path - Walkers, cyclists and horse riders (new)
- Permissive Path - Walkers, cyclists and horse riders (surface upgraded)
- Permissive Path - Walkers and cyclists (redesignated to include access for horse riders)
- Off Carriageway Track - Walkers and cyclists (new)
- Off Carriageway Track - Walkers, cyclists and horse riders (new)
- Off Carriageway Track - Horse riders (new)
- Off Carriageway Track - Walkers and cyclists (redesignated as bridleway)

○ New Signalised crossing
○ New Pegasus crossing

Source: CSR, Mower, Earthstar Geographics, and the GIS User Community

Rev	Status	Rev. Date	Purpose of revision	Drawn	Chk'd	Apprv'd
P01	S0	03/08/2023	Deadline 2	EB	BC	JBa

Notes:

The aerial background map is shown for contextual purposes only (2018).

The Project Order Limits Boundary has been omitted for clarity.

The proposed works shown are illustrative only and will be subject to change as part of detailed design development. Any changes will be limited to being within the constraints included in the Development Consent Order (application document TR010032/APP/3.1).

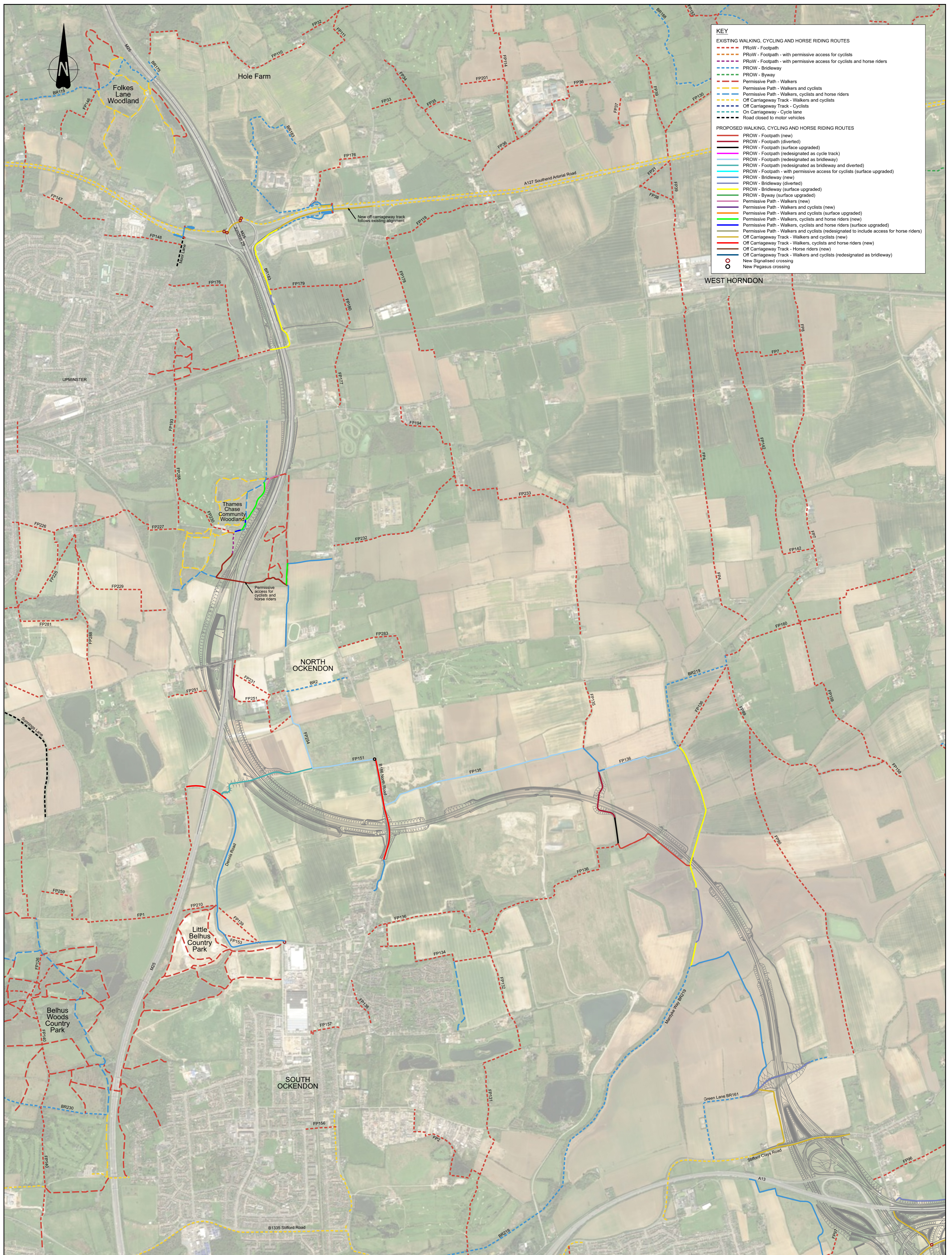
Further detail of WCH provision is provided in the Project Design Report (Application Document No. 7.4) and the Design Principles (Application Document No. 7.5) of the Development Consent Order.

Client

Project

LOWER THAMES CROSSING

Status	Deadline 2	Original Size	Revision
Application Document Number	TR010032/EXAM/9.60	A1	P01
Drawing title	Existing Walking, Cycling and Horse Riding Routes North of the River 2 of 2		
Drawing Number	HE540039-CJV-SAR-ZZZ_ZZ000000_DR-AX-00012		



KEY

EXISTING WALKING, CYCLING AND HORSE RIDING ROUTES

- PRoW - Footpath
- PRoW - Footpath - with permissive access for cyclists
- PRoW - Footpath - with permissive access for cyclists and horse riders
- PRoW - Bridleway
- PRoW - Byway
- Permissive Path - Walkers
- Permissive Path - Walkers and cyclists
- Permissive Path - Walkers, cyclists and horse riders
- Off Carriageway Track - Walkers and cyclists
- Off Carriageway Track - Cyclists
- Off Carriageway Track - Cycle lane
- Road closed to motor vehicles

PROPOSED WALKING, CYCLING AND HORSE RIDING ROUTES

- PRoW - Footpath (new)
- PRoW - Footpath (diverted)
- PRoW - Footpath (surface upgraded)
- PRoW - Footpath (redesignated as cycle track)
- PRoW - Footpath (redesignated as bridleway)
- PRoW - Footpath (redesignated as bridleway and diverted)
- PRoW - Footpath - with permissive access for cyclists (surface upgraded)
- PRoW - Bridleway (new)
- PRoW - Bridleway (diverted)
- PRoW - Bridleway (surface upgraded)
- PRoW - Byway (surface upgraded)
- PRoW - Byway (new)
- Permissive Path - Walkers (new)
- Permissive Path - Walkers and cyclists (new)
- Permissive Path - Walkers and cyclists (surface upgraded)
- Permissive Path - Walkers, cyclists and horse riders (new)
- Permissive Path - Walkers, cyclists and horse riders (surface upgraded)
- Permissive Path - Walkers and cyclists (redesignated to include access for horse riders)
- Off Carriageway Track - Walkers and cyclists (new)
- Off Carriageway Track - Walkers, cyclists and horse riders (new)
- Off Carriageway Track - Horse riders (new)
- Off Carriageway Track - Walkers and cyclists (redesignated as bridleway)

○ New Signalled crossing
○ New Pegasus crossing

Source: ESRI, Mower, Earthstar Geographics, and the GIS User Community

Rev	Status	Rev. Date	Purpose of revision	Drawn	Chk'd	Appr'd
P01	S9	03/08/2023	Deadline 2	EB	BC	JBa

Notes:

The aerial background map is shown for contextual purposes only (2018).

The Project Order Limits Boundary has been omitted for clarity.

The proposed works shown are illustrative only and will be subject to change as part of detailed design development. Any changes will be limited to being within the constraints included in the Development Consent Order (application document TR010032/APP/3.1).

Further detail of WCH provision is provided in the Project Design Report (Application Document No. 7.4) and the Design Principles (Application Document No. 7.5) of the Development Consent Order.

Client

Project

LOWER THAMES CROSSING

Status	Deadline 2	Original Size	Revision
Application Document Number	TR010032/EXAM/9.60	A1	P01
Drawing title	Proposed Walking, Cycling and Horse Riding Routes North of the River 2 of 2		
Drawing Number	HE540039-CJV-SAR-ZZZ_ZZ000000_DR-AX-00022		

If you need help accessing this or any other National Highways information, please call **0300 123 5000** and we will help you.

© Crown copyright 2023.

You may re-use this information (not including logos) free of charge in any format or medium, under the terms of the Open Government Licence. To view this licence:

visit www.nationalarchives.gov.uk/doc/open-government-licence/

write to the **Information Policy Team, The National Archives, Kew, London TW9 4DU**, or email psi@nationalarchives.gsi.gov.uk.

Mapping (where present): © Crown copyright and database rights 2023 OS 100030649. You are permitted to use this data solely to enable you to respond to, or interact with, the organisation that provided you with the data. You are not permitted to copy, sub-licence, distribute or sell any of this data to third parties in any form.

If you have any enquiries about this publication email info@nationalhighways.co.uk or call **0300 123 5000***.

*Calls to 03 numbers cost no more than a national rate call to an 01 or 02 number and must count towards any inclusive minutes in the same way as 01 and 02 calls.

These rules apply to calls from any type of line including mobile, BT, other fixed line or payphone. Calls may be recorded or monitored.

Printed on paper from well-managed forests and other controlled sources when issued directly by National Highways.

Registered office Bridge House, 1 Walnut Tree Close, Guildford GU1 4LZ

National Highways Limited registered in England and Wales number 09346363